



THE RITZ-CARLTON

The Ritz-Carlton, Hong Kong

MICE Brochure



HOTEL OVERVIEW

*Welcome to a Sanctuary of
Refined Ambiance and Elegance*

Dominating the skyline as the world's highest hotel, The Ritz-Carlton, Hong Kong occupies the 102 to 118 floors of the acclaimed International Commerce Centre, with a height of 490 meters above sea level. Modern in design, the hotel reflects the sophistication, style and elegance of the Ritz-Carlton brand in a contemporary way.

The Ritz-Carlton, Hong Kong

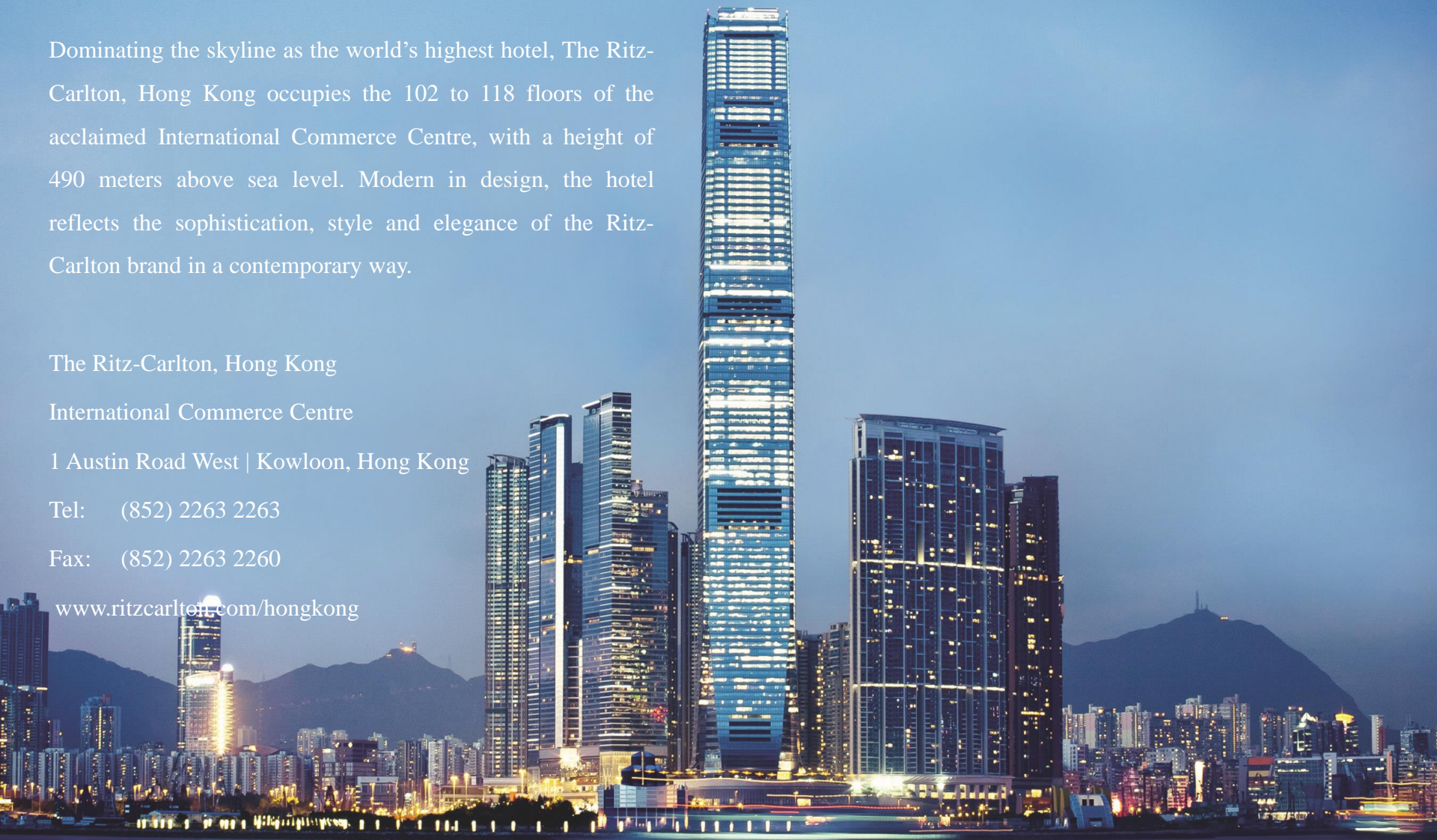
International Commerce Centre

1 Austin Road West | Kowloon, Hong Kong

Tel: (852) 2263 2263

Fax: (852) 2263 2260

www.ritzcarlton.com/hongkong





*Welcome to a Sanctuary of
Refined Ambiance and Elegance*

Our stunning luxury hotel boasts incomparable views of Victoria Harbour and the glimmering skyline of neighbouring Hong Kong Island. Inside, soaring architectural elements encrusted with custom glass artwork echo the signature glamour of the city below.



LOCATION

A dynamic transportation hub in the heart of Hong Kong

Located atop the Airport Express Kowloon Station and bus terminus, ICC is strategically positioned at the junction of major rail lines, offering unparalleled transportation access for conducting local, international and cross-border business in the burgeoning Pearl River Delta region.

It only takes

- 5 minutes ride to Central
- 8 minutes walk to High Speed Rail Link Station
- 15 minutes walk to West Kowloon Cultural District & Xiqu Centre
- 19 minutes rides to Shenzhen
- 20 minutes ride to Hong Kong International Airport
- 25 minutes ride to Asia World Expo

HIGH SPEED RAIL LINK



- Opened in September 2018
- 8-min walk to station
- Connects Hong Kong to Mainland China's vast high-speed rail network
- 19 min to Shenzhen
- <60 min to Guangzhou





ACCOMMODATION



Deluxe Victoria Harbour Room



Carlton Suite – Victoria Harbour



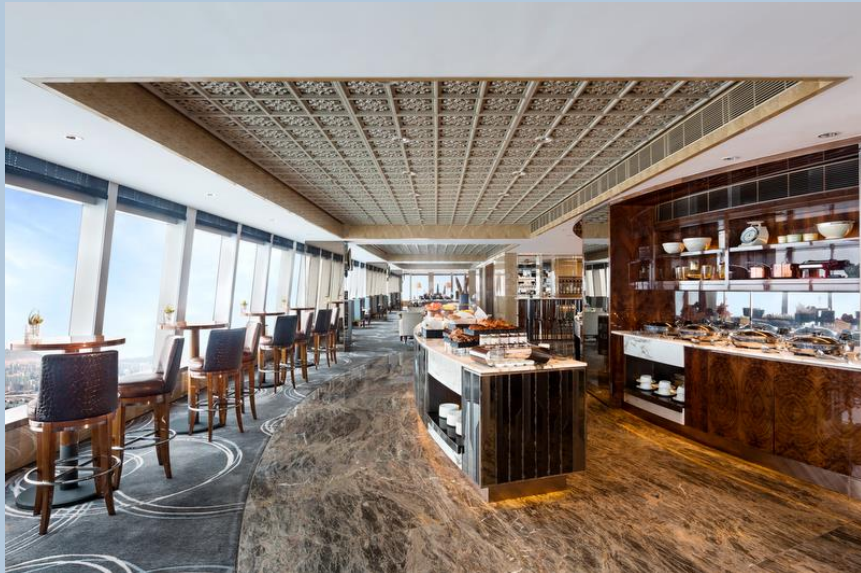
Deluxe Victoria Harbour Suite



Premier Executive Suite – Victoria Harbour

ACCOMMODATION

312 guest rooms all offering spectacular city and harbour views, with choices of accommodations including Deluxe Victoria Harbour Rooms, Premier Suites, and the magnificent two bedroom Ritz-Carlton Suite.



THE RITZ-CARLTON CLUB LOUNGE

The Ritz-Carlton Club offers complimentary food and beverage presentations 24 hours a day, as well as a dedicated Club Concierge, work stations, meeting rooms and WiFi throughout. With spectacular and panoramic views, The Ritz-Carlton Club Lounge is a sanctuary of refined ambiance.

Benefits for The Ritz-Carlton Club & Suite Guests

24-hour access to The Ritz-Carlton Club Lounge featuring:

- Personalised Concierge services
- Continental breakfast, Afternoon Tea and Evening cocktails
- Business Centre services
- Private check-in from 06:00 am till 11:00 pm
- Late check-out (Subject to hotel availability)
- Complimentary local calls, and pressing service for one suit upon arrival

Location: Level 116



DINING

NOURISH

Savour fine dining in Asia's culinary capital at The Ritz-Carlton, Hong Kong

The Ritz-Carlton, Hong Kong has been at the forefront of Hong Kong's dining scene since opening in 2011, and continues to excite food connoisseurs with its gourmet offerings. The six dining venues offer uninterrupted Victoria Harbour and Hong Kong Island views, as well as private dining rooms for intimate and celebratory occasions.



Tosca di Angelo



Tin Lung Heen



Almas Caviar Bar



The Lounge & Bar



Café 103

T O S C A
di Angelo

天龍軒
TIN LUNG HEEN

THE LOUNGE & BAR

ALMAS CAVIAR BAR
CAVIAR HOUSE & PRUNIER

Café 103

THE RITZ-CARLTON

THE RITZ-CARLTON CONFIDENTIAL & PROPRIETARY INFORMATION | 12



On Level 118

Alfresco destination rooftop bar – OZONE with outdoor seating and private rooms



A photograph of a bar interior. Several bottles of wine are hanging from a metal rack. The labels on the bottles are visible, with the word "INCEPTION" clearly legible on several of them. The background is dark and out of focus, showing blurred lights and what appears to be a city skyline at night. The overall lighting is dim and atmospheric.

PAMPER

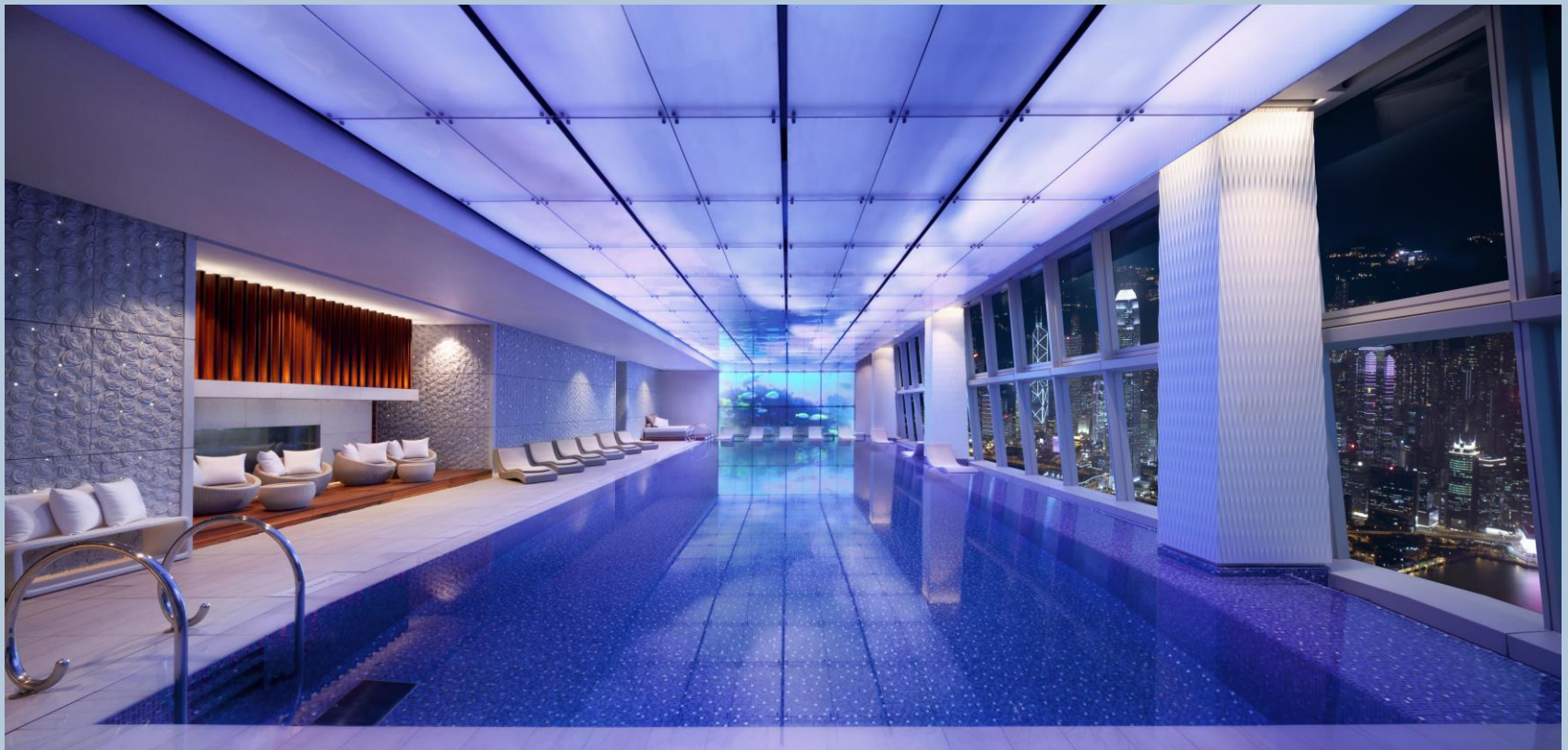
RELAX

Located on Level 116, covering 860 sq.m., The Ritz-Carlton Spa Hong Kong dominates the city skyline and re-defines the urban spa experience. Featuring nine deluxe treatment rooms and two couples suites, offering floor-to-ceiling windows with panoramic views, our world-class team of professional therapists ensure a spa experience like no other.



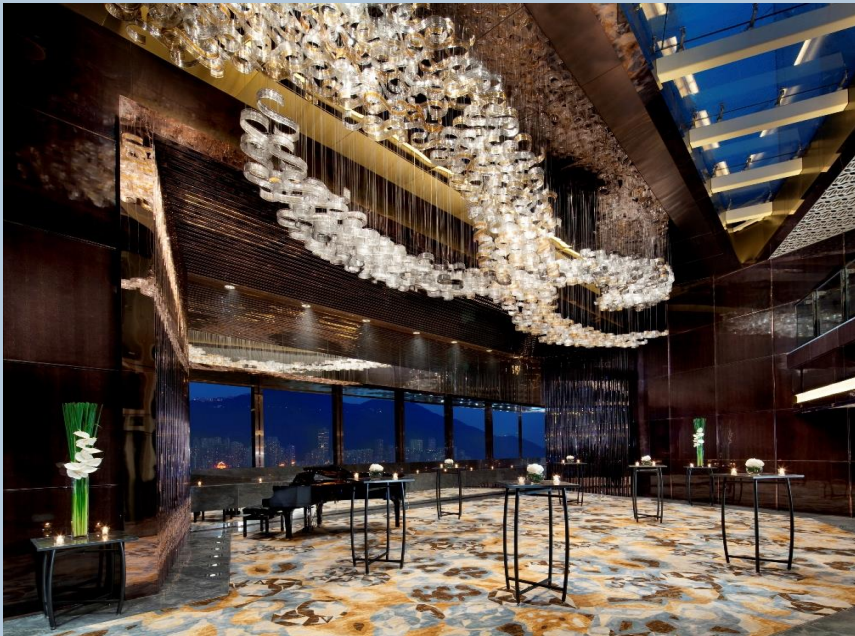
ENERGIZE

The world's highest infinity pool on Level 118. With a unique ceiling reflecting specially crafted images, re-energize and feel on top of the world. A state-of-the-art fitness centre with an outdoor area is also located on Level 118.





GATHER



GATHER

One of the largest ballrooms in the city that covers 870 sq.m./ 9,364 sq.ft. elaborately decorated with a sea of crystal chandeliers and a décor suited for wedding, meetings and gala events.

Complemented by an additional six meeting rooms, the 1,125 sq.m./ 12,001 sq.ft. of total meeting space is truly the social centre of Hong Kong and set the benchmark for events in the region.

Location: Diamond Ballroom, Level 3
 Meeting Rooms, Levels 3 & 8

* Note that Level 3 and Level 8 are only one floor apart and can be conveniently accessed by escalators and elevators.

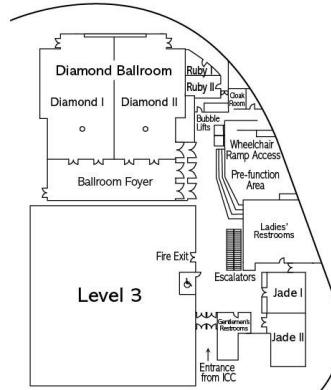
THE RITZ-CARLTON, HONG KONG

A meeting of the minds that also satisfies the senses

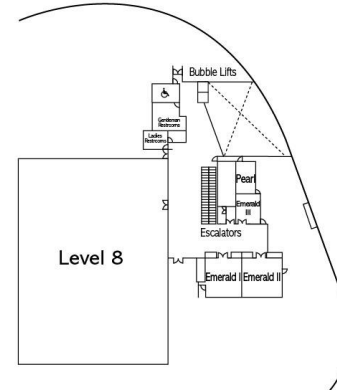
The Ritz-Carlton, Hong Kong is a business hotel featuring luxurious conference spaces and exceptional service. From exclusive board meetings and attention-grabbing product launches, to corporate-wide celebrations and trade show lodging, our distinctive hotel is ideal for all of your Hong Kong business travel needs. The hotel offers more than 1,500 square meters /17,000 square feet of function spaces, as well as one of the largest ballrooms in the city at 870 square meters / 9,000 square feet, complimented by additional five meeting rooms. An experienced events and culinary team is on hand to assist in organizing tailor-made, theme events to create a unique and memorable experience for every Ritz-Carlton guest.

MEETING AMENITIES

- More than 1,500 square meters / 17,000 square feet of meeting and conference space
- A 870 square meters / 9,000 square feet Ballroom with six-meter ceiling
- Five multi-purpose meeting rooms
- Built-in LCD projectors
- 3.9mm High Definition LED Wall Display
- State-of-art audio and video visual equipment
- Teleconferencing facilities
- Event concierge services
- Wired and wireless internet access
- Catering service
- Entertainment service
- Wedding specialists
- Professional on-site technicians



THE RITZ-CARLTON, HONG KONG - LEVEL 3



THE RITZ-CARLTON, HONG KONG - LEVEL 8

Venue	Square Feet	Square Meters	Dimensions		Ceiling Height		Banquet Rounds	Theater	Reception	Classroom	U-Shape	Boardroom
			Feet	Meters	Feet	Meters						
Diamond Ballroom	7279	676	96 x 84	29 x 26	20	6	408	500	600	330	90	---
Diamond I	3629	337	48 x 84	15 x 25	20	6	180	250	300	165	48	---
Diamond II	3650	339	48 x 84	15 x 25	20	6	180	250	300	165	48	---
Diamond Ballroom and Foyer	9364	870	96 x 109	29 x 30	20	6	624	905	800	414	---	---
Ballroom Foyer	2085	194	85 x 25	26 x 8	20	6	---	---	200	---	---	---
Pre-Function Area	1788	166	53 x 54	16 x 17	20	6	---	---	---	---	---	---
Pre-Function Area & Hallway	3771	350	69 x 93	21 x 28	10.8	3.6	---	---	---	---	---	---
Jade I	610	57	26 x 26	8 x 7.5	10.8	3.6	24	35	30	24	21	---
Jade II	824	77	37 x 26	10 x 7.5	10.8	3.6	48	55	50	39	30	---
Jade I & II	1434	133	63 x 25	19 x 7.5	10.8	3.6	84	110	90	84	48	---
Jade Foyer	1210	112	45 x 34	13 x 10	10.8	3.6	---	---	---	---	---	---
Emerald I	581	54	32 x 19	10 x 6	8.6	2.6	24	40	30	24	21	---
Emerald II	622	58	32 x 25	10 x 7.5	8.6	2.6	24	40	30	24	21	---
Emerald III	251	24	21.9 x 11.8	6.7 x 3.6	7.5	2.3	12	20	25	---	---	12
Emerald I & II	1203	112	31 x 44	10 x 13.5	8.6	2.6	72	80	60	48	39	---
Pearl	147	13	15.5 x 9.5	4.7 x 2.9	7.5	2.2	---	---	---	---	---	8

The Ritz-Carlton, Hong Kong
 International Commerce Centre, 1 Austin Road West, Kowloon, Hong Kong
 TEL 852 2263 2263 FAX 852 2263 2260
www.ritzcarlton.com/hongkong



THE RITZ-CARLTON
 HONG KONG

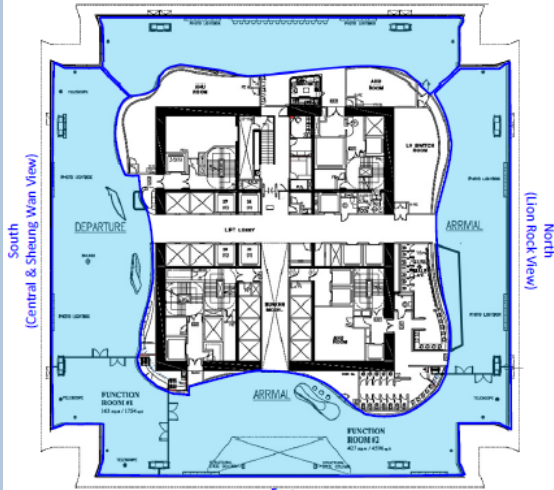
LUXE CATERING AT SKY100

- Sky100 – observatory deck on Level 100 in the same building, ICC
- Ideal “off-site venue” for gala dinner or other events with full daylight and bird-eye view of HK
- Outside catering service can be arranged by hotel
- Group staying in-house can have direct elevator access from hotel lobby to the venue



360° Hong Kong View

West
(Tsing Ma Bridge View)

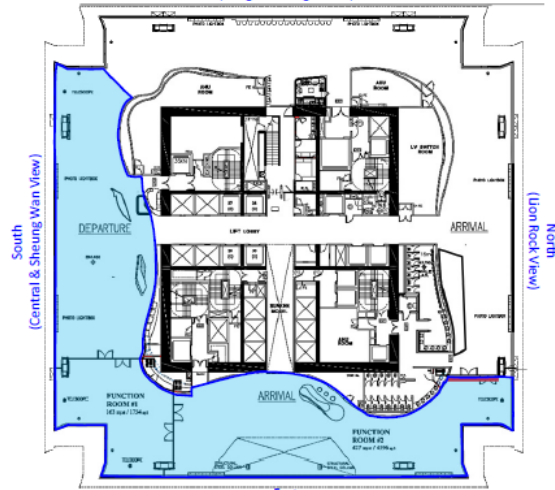


East
(Central & Victoria Harbour View)

Whole Deck (16,000 sq ft / 1,686.5 sqm)	
Banquet	42 tables
Cocktail	1000 pax
Theatre	680 pax

180° Victoria Harbour View

West
(Tsing Ma Bridge View)

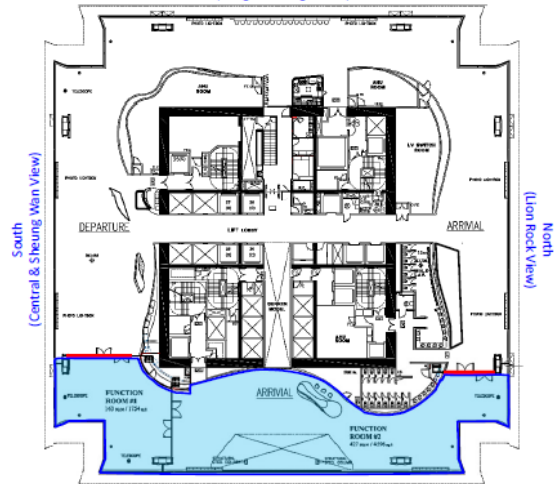


East
(Central & Victoria Harbour View)

Half Floor – South East side (8,000 sq ft / 743.2 sqm)	
Banquet	28 tables
Cocktail	600 pax
Theatre	500 pax

Central & Victoria Harbour View

West
(Tsing Ma Bridge View)

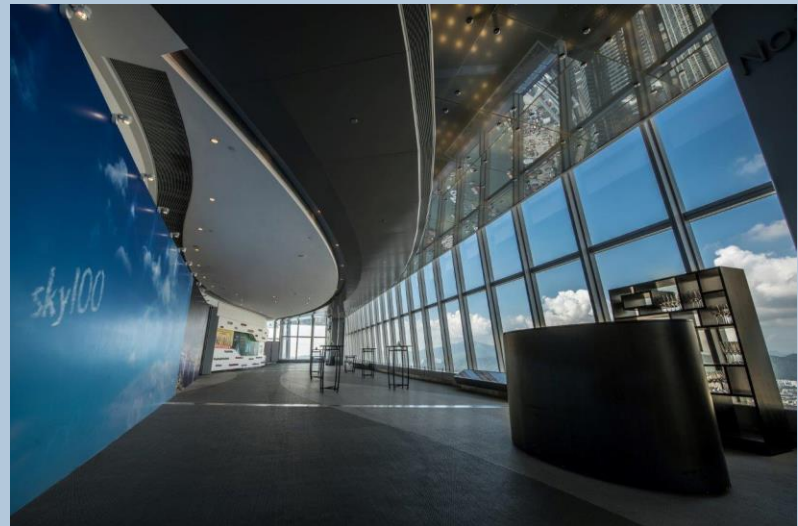


East
(Central & Victoria Harbour View)

Full East (6,350 sq ft / 589.9 sqm)	
Banquet	17 tables
Cocktail	300 pax
Theatre	250 pax

LUXE CATERING AT SKY100

- Hotel supplies banquet service labour, culinary staff, stewarding, linen, cutlery, crockery, glassware
- Any AV equipment and lighting to be arranged by production house



THANK YOU



THE RITZ-CARLTON